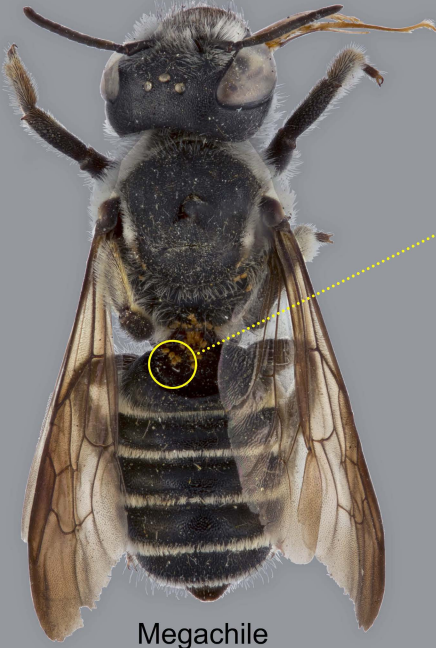


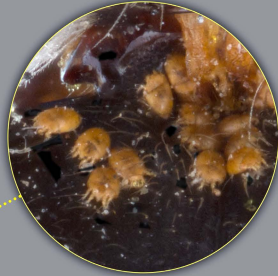
Mites found on adult leafcutting and resin bees (genus *Megachile*)

All mites without magnification signs (e.g., "2x") are approximately to scale.

mites on bee at lower magnification



Megachile



Vidia



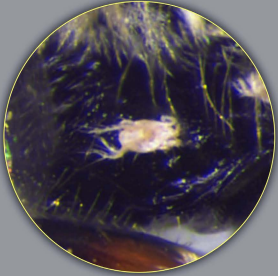
Cerophagopsis



Tortonia



Chaetodactylus



Trochometridium



Imparipes

slide-mounted mites at higher magnification (can be distinguished by shape)



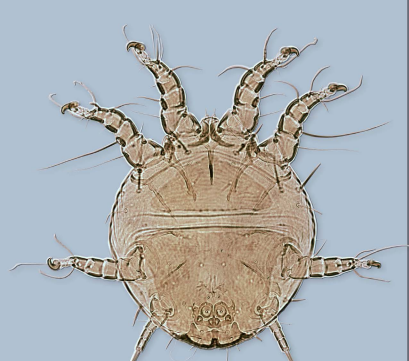
Vidia (phoretic deutonymph)



Cerophagopsis (phoretic deutonymph)



Tortonia (phoretic deutonymph)



Chaetodactylus (phoretic deutonymph)



Schulzea (phoretic deutonymph)



Trochometridium (♀)



Pyemotes (♀)



Imparipes (♀)