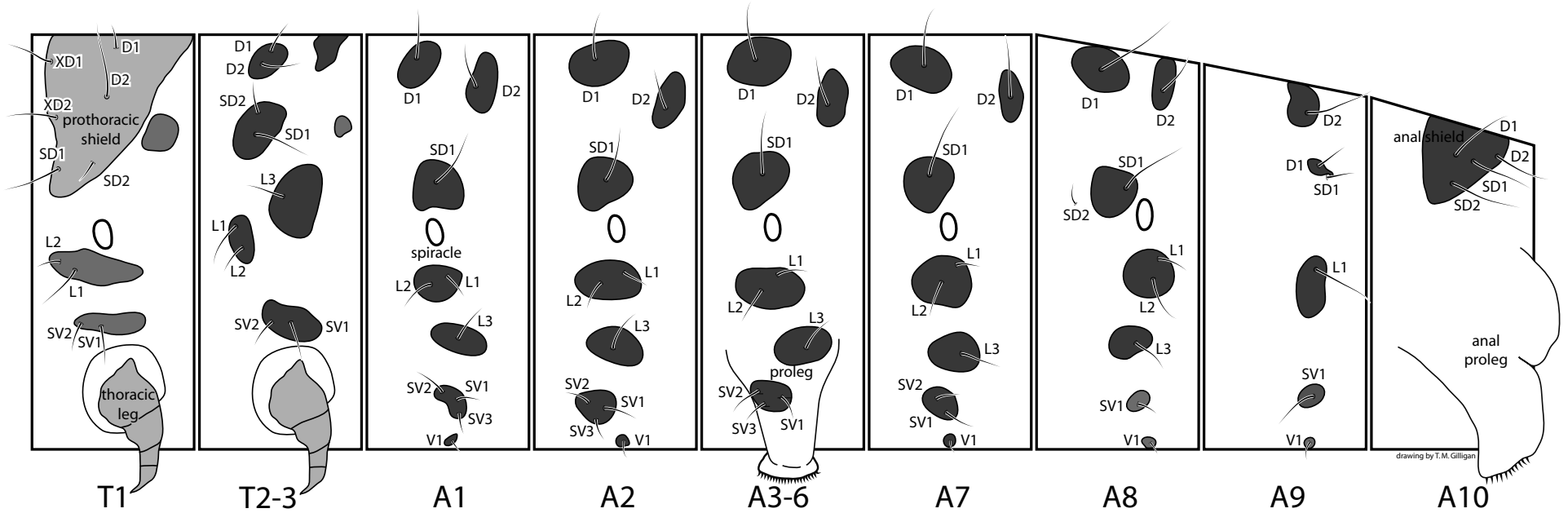


*Diatraea considerata* Heinrich



Gilligan, T. M. & S. C. Passoa. 2014. *LepIntercept*, An identification resource for intercepted *Lepidoptera* larvae. Identification Technology Program (ITP), USDA/APHIS/PPQ/S&T, Fort Collins, CO [accessed at [www.lepintercept.org](http://www.lepintercept.org)].