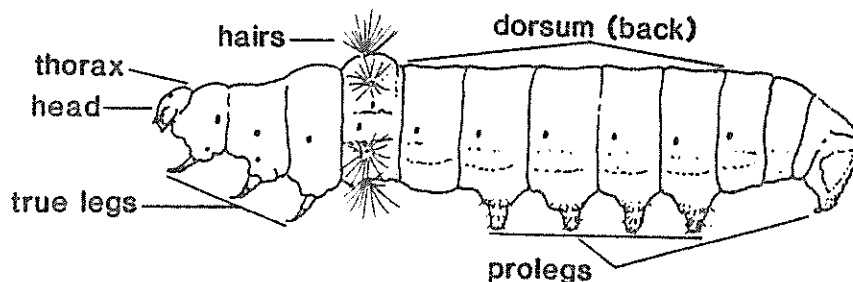


KEY TO THE COMMON CABBAGE CATERPILLARS OF FLORIDA

D.H. Habeck and R.B. Workman
Entomology and Nematology Department
University of Florida

This key is for use by growers, fieldmen, and others in the identification of the common caterpillars feeding on crucifers in Florida. Most attack other crops also. It lists the major characteristics which separate one species from another. Study of the key before use will allow easier and quicker identifications.

Parts of
caterpillar



LOOPERS

1. Larvae pale green, to 1 1/2" long, with white longitudinal stripes. 3 pairs of prolegs....cabbage looper (Trichoplusia ni).
2. As above with dark spots on head and thorax. True legs dark....soybean looper (Pseudoplusia includens).

NONLOOPER, VELVETY APPEARANCE

1. Larvae med. to dark green, to 1 1/4" long....imported cabbageworm (Pieris rapae).

NONLOOPER, HAIRY

1. Larvae reddish brown to black, to 2" long. Hairs 1/4" long....salt marsh caterpillar (Estigmene acrea).

NONLOOPERS, SMOOTH--STRIPED

1. Larvae bluish gray, to 1" long. Stripes transverse on dorsum....cross-striped cabbageworm (Evergestis rimosalis).
2. Larvae yellowish, to 3/4" long. 5 brownish longitudinal stripes on dorsum. Feed in bud and web leaves together....cabbage webworm (Hellula rogatalis).
3. Larvae light green to black, to 1 1/4" long. Dorsum mottled. Identifying black spot above center pair of true legs....beet armyworm (Spodoptera exiqua).
4. Larvae brownish, to 1 1/2" long. Dorsum with dark triangles. Longitudinal stripes with yellow lateral stripe ending in 2 dark spots behind 3rd pair of true legs....southern armyworm (Spodoptera eridania).
5. Larvae yellowish green to black, to 1 1/2" long. Stripes longitudinal with dorsal ones spiny under magnification. Often with a dark double line in center of dorsum. Found Sep.-Nov. in lower leaves and head....corn earworm (Heliothis zea).
6. Larvae yellowish green, to 1 1/2" long, with black dorsal spots. Purplish longitudinal stripes. Head with black spots containing white hairs....Gulf white butterfly (Pieris monuste).

NONLOOPERS, SMOOTH--NOT STRIPED

1. Larvae yellow to green, to 1/2" long. Wiggly and hang by silk thread when disturbed....diamondback moth (Plutella xylostella).
2. Larvae dark green, semitransparent, to 3/4" long, with shiny black spots. Fold and web leaves together....southern beet webworm (Herpetogramma bipunctalis).
3. Larvae brownish gray, to 1 1/2" long. Epidermis spiny under magnification. Inhabit soil. Cut off plants or feed in lower leaves and head....granulate cutworm (Feltia subterranea).
4. Larvae gray to black, to 1 3/4" long. Epidermis cobblestone-like under magnification. Feeds as #3....greasy or black cutworm (Agrotis ipsilon).