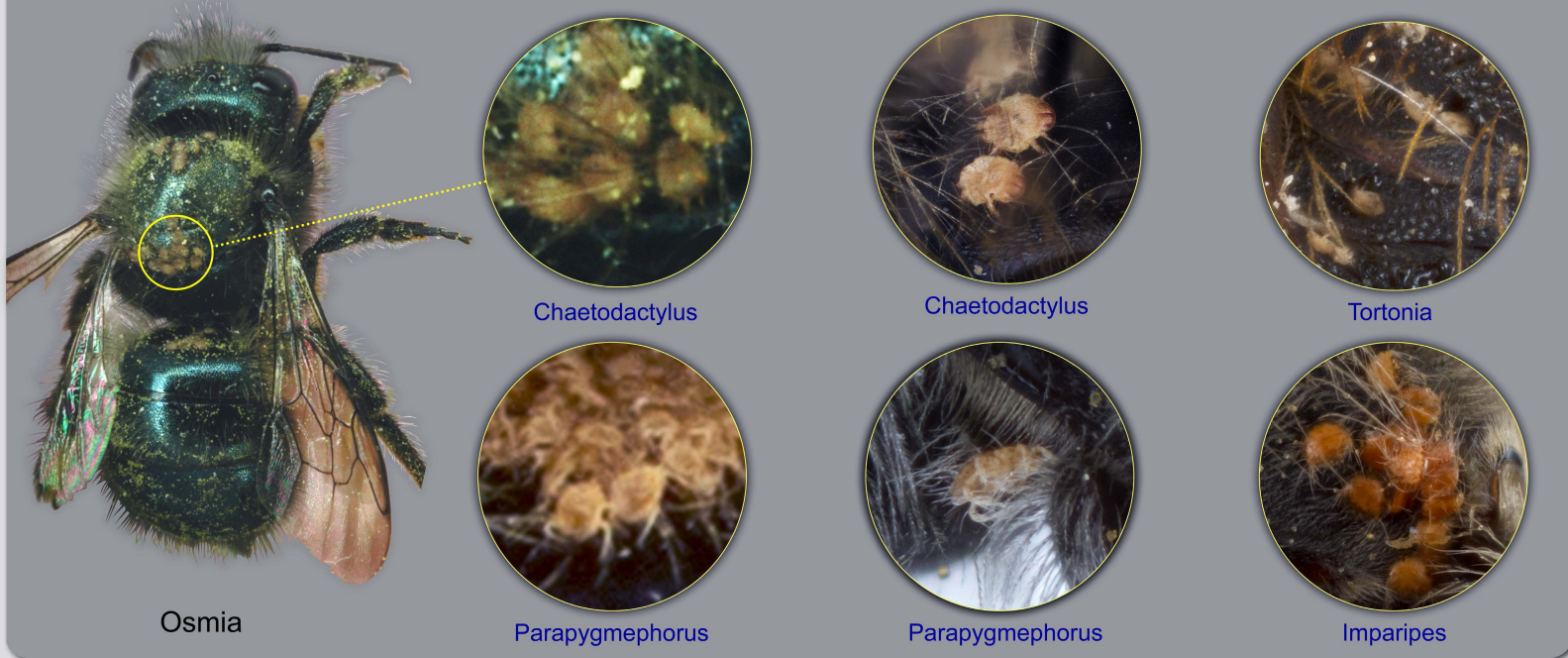


Mites found on adult orchard mason bees (genus *Osmia*)

All mites without magnification signs (e.g., "2x") are approximately to scale.

mites on bee at lower magnification



Osmia

Chaetodactylus

Chaetodactylus

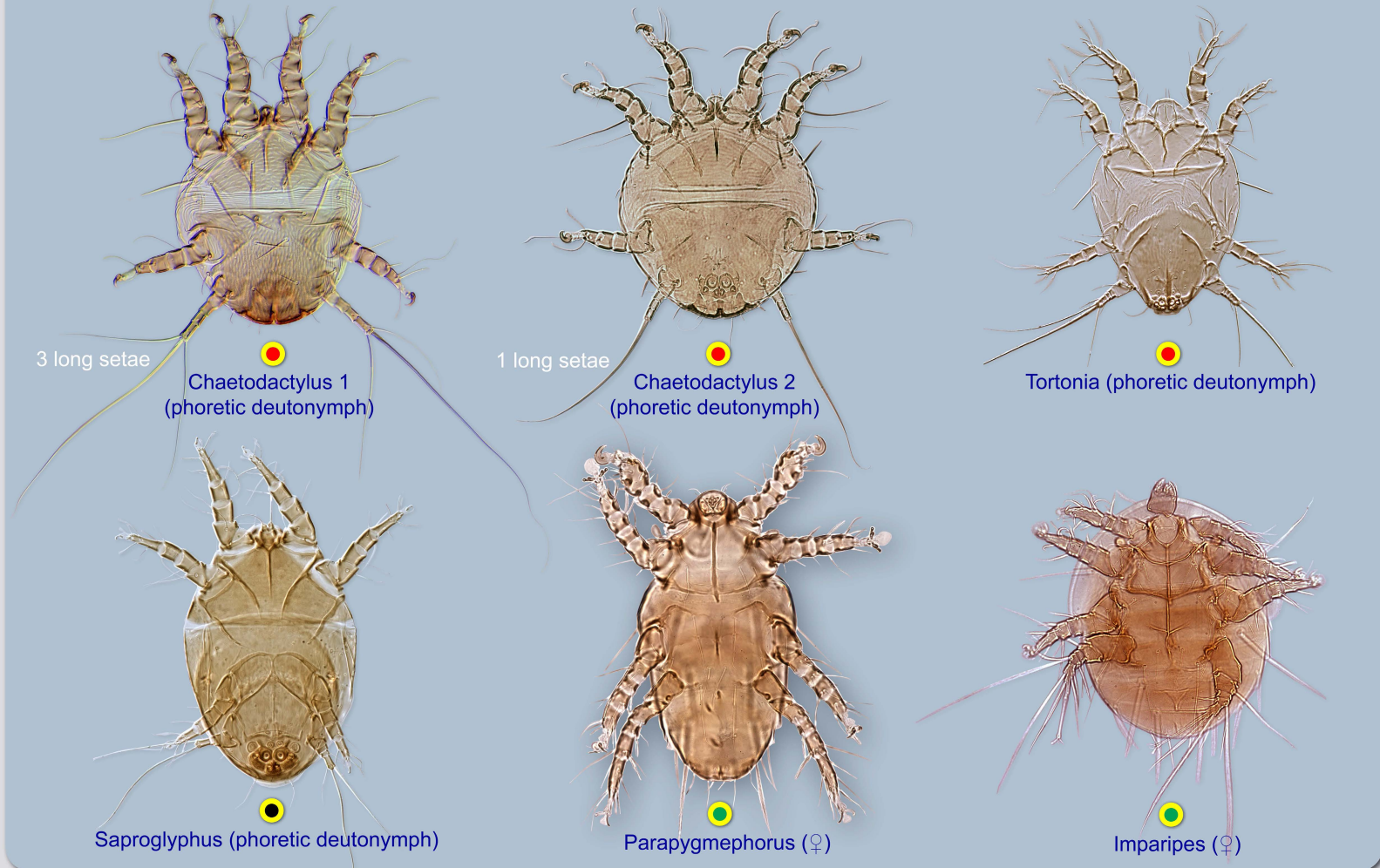
Tortonia

Parapygmephorus

Parapygmephorus

Imparipes

slide-mounted mites at higher magnification (can be distinguished by shape)



3 long setae

Chaetodactylus 1
(phoretic deutonymph)

1 long setae

Chaetodactylus 2
(phoretic deutonymph)

Tortonia (phoretic deutonymph)

Saproglyphus (phoretic deutonymph)

Parapygmephorus (♀)

Imparipes (♀)