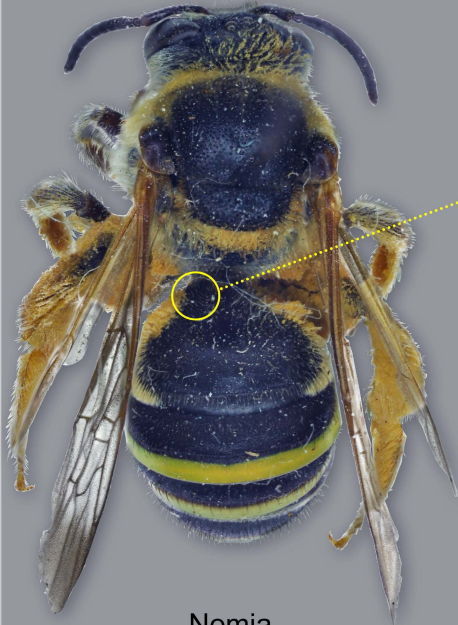


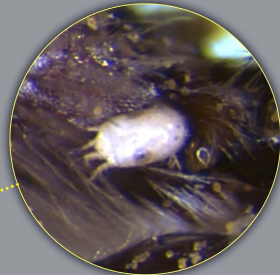
Mites found on adult alkali bees (genus *Nomia*)

All mites without magnification signs (e.g., "2x") are approximately to scale.

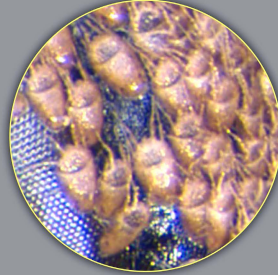
mites on bee at lower magnification



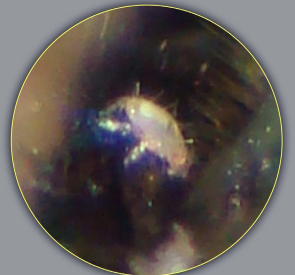
Nomia



Sancassania boharti



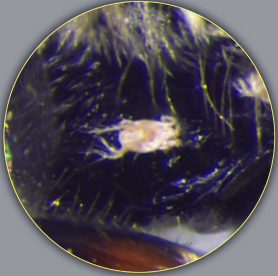
Glyphanoetus



Parapygmephorus



Parapygmephorus



Trochometruidium



Imparipes

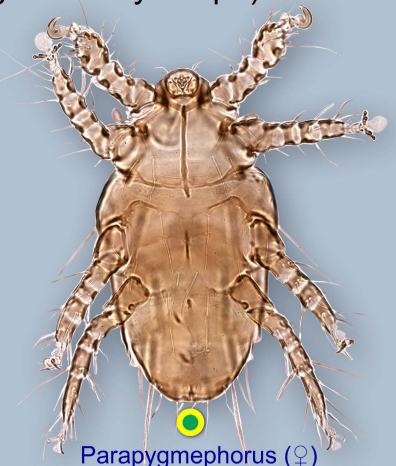
slide-mounted mites at higher magnification (can be distinguished by shape)



Sancassania
(phoretic deutonymph)



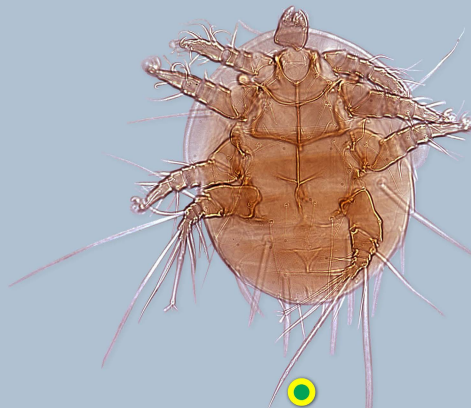
Glyphanoetus
(phoretic deutonymph)



Parapygmephorus (♀)



Trochometruidium (♀)



Imparipes (♀)



Ereynetes (♀)
rare on host